

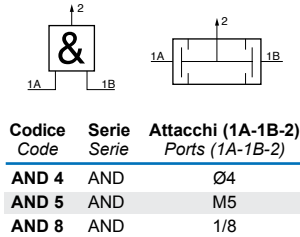
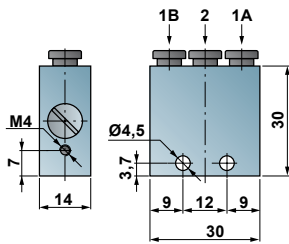
## ELEMENTI LOGICI - LOGIC VALVES

Gli elementi di logica pneumatica sono valvole a comando pneumatico o automatiche, utili quando si voglia generare un ciclo complesso senza l'ausilio di un PLC oppure quando non sia possibile avere valvola a comando elettrico nella zona di installazione dell'impianto. Questi elementi possono essere fissati alla macchina per mezzo di appositi fori nei corpi oppure per mezzo di una utile squadretta di fissaggio.

*Pneumatic Logic elements are pneumatic pilot valves to use when it's necessary to create a complicated pneumatic circuit without using a PLC. Moreover it can be useful when isn't possible to use solenoid valves in the working place. Those elements can be assembled on the frame using the holes on the bodies or using the suitable bracket.*

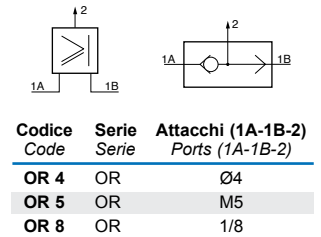
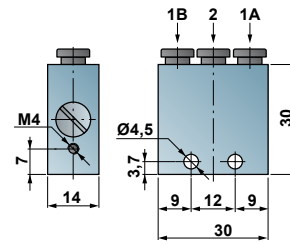
**Elemento AND**  
AND element

# AND ..



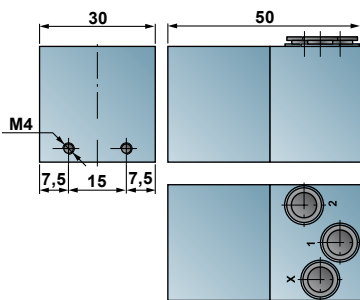
**Elemento OR**  
OR element

# OR ..

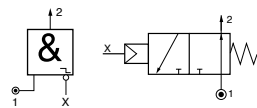


# NOT

**Elemento NOT**  
NOT element

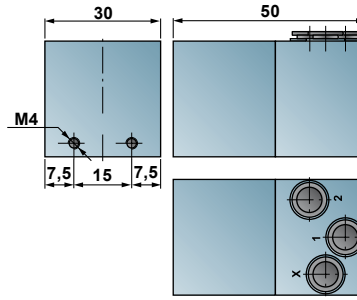


0,3 ÷ 8 bar

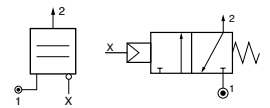


# YES

**Elemento YES**  
YES element

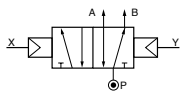
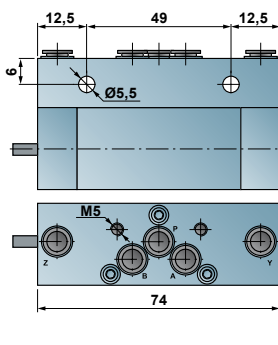


0,3 ÷ 8 bar



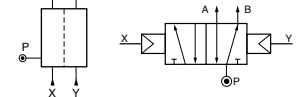
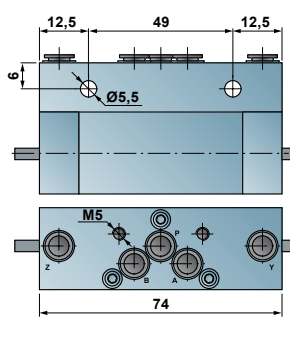
# MEM.M

**Monostabile**  
Monostable



# MEM.B

**Memoria bistabile**  
Bistable memory



# SQEL

**Squadretta per il fissaggio degli elementi logici con attacco tubo Ø4**

*Mounting bracket for logic elements with Ø4 hose connection*

